



Level Laser Mikrolaser ML2

Rugged design – All ML2 models are built to be strong and job-site tough. The mechanical/optical unit is mounted in a sealed waterproof aluminum housing. The housing has an integrated handle for ease of handling.

Ease of set up – Setting up the laser is very simple. Just place the laser approximately horizontal, then the automatic self-leveling will correct the beam's position up or down.

Ease of use – The ML2 has a touch control panel for:

- Power On/Off.
- Manual/Automatic selection.
- Lateral adjustment.
- Adjustment of slope in manual mode.

Power save feature – Whenever the ML2 is placed in the case the power is turned off automatically.

Battery life & recharging – One charge lasts for approximately 20 hours. Re-charging takes less than 1 hour. Changing of the battery is possible due to the front-loading battery compartment and ease of access.

Power sources – The ML2 on-board battery is a standard 7.2V NiCad rechargeable battery, such as Makita™ type.

The battery is easy to exchange without any tools. The battery is widely available from tool outlets or via your Mikrofyn dealer at a very low cost.

Alternative power sources available as accessories:

- 130 or 230AC volt power converter.
- 12-volt battery cable with alligator clip.
- 12-volt battery cable for cigarette lighter connector.

Standard Package

- Instrument.
- Handheld detector w/clamp.
- Battery charger.
- Battery.
- User's manual.

Accessories

Trivet for vertical operation of the ML2V model.

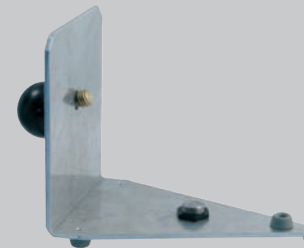
Alternative accessories

Besides the many standard accessories included in the case, you can add even further to the functionality of your laser. Lots of accessories give you plenty of possibilities.



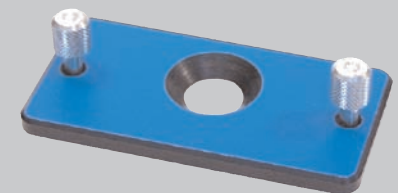
Extern Power Supply

Adding an extern power supply to your laser gives you even more running time and thus more advantages.



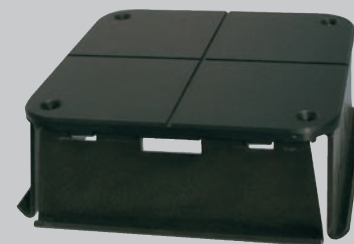
Z-fitting

The Z-fitting gives you a laser in place lying or positioned on a tripod.



Battery Door for Extern Power Supply

The battery door easily replaces the standard door when using an extern power supply.



Top with Blind

The blind is perfect at a worksite when several lasers are used at the same time. You choose which direction you want to work in and the blind makes sure that other laser beams do not interfere with your laser beam.



Technical specifications

Working distance (diameter):	from 800m to 1600m
Accuracy:	2mm/100m
Automatic leveling range:	± 18%
Lateral adjustment left/right:	±18%
Manual or remote control:	
Rotational speed:	300 rpm (Optional 600 rpm)
Laser/Optics	
Diode:	650 nm
Maximum output:	1 mW
Beam diameter:	12 mm
Optics and windows are AR coated.	
Battery:	7.2 V NiCad rechargeable 1.4 Ah. Completely recharged in less than one hour. Operational time approximately 20 hours.
Waterproof:	Yes (IP68)
Dimensions:	17 x 18 x 24 cm
Weight:	5 kg

Optional ML2 models

ML2V:	Vertical standard
ML2VD:	Visual Diode standard
ML2VVD:	Vertical + Visual Diode standard
ML2I:	Split Beam standard
ML2R:	Remote Control standard
ML2RVD:	Remote Control + Visual Diode standard

Visual Diode: Stronger diode (635nm, 5mW), which makes it much easier to see the beam.

The working distance exceeds 1600m when using a Mikrofyn machine detector.

Vertical: Features automatic self-leveling when working vertically.

Split Beam: Features a split beam, which means it emits two beams, perpendicular to each other.



MikrofynPower

One battery powers all lasers, saves you money and makes life easier

- All MIKROFYN Lasers are powered by an on-board 7.2V NiCad rechargeable standard battery.
- The battery is easy to exchange without any tools.
- The battery is widely available from tool outlets.
- Standard battery = low price.
- One charge lasts for approximately 20 hours (30 hrs pipe laser).
- 1 hour fast charger.
- The front-loading battery compartment means ease of access.
- More: www.mikrofyn.com



All Mikrofyn lasers are supplied in a sturdy carrying case. The case will fit the laser and all necessary accessories – your laser receiver, the charger, extra battery, wall bracket and everything else will fit into the case. The case is compact so it can be stowed under or behind the seat in your car and you don't have to worry about wear and tear as the laser is well protected by the case.



MIKROFYN A/S · Bondovej 16 · 5250 Odense SV · Denmark · www.mikrofyn.com

Since the start in 1987 Mikrofyn A/S has placed itself among the top-five worldwide manufacturers of professional precision lasers and machine control systems. The profits of the business are reinvested in new products and growing the business. Mikrofyn is built upon sound principals of developing and manufacturing state-of-the-art products, supported by experts and cooperating with outstanding professional local distributors.

Authorized Mikrofyn Distributor: